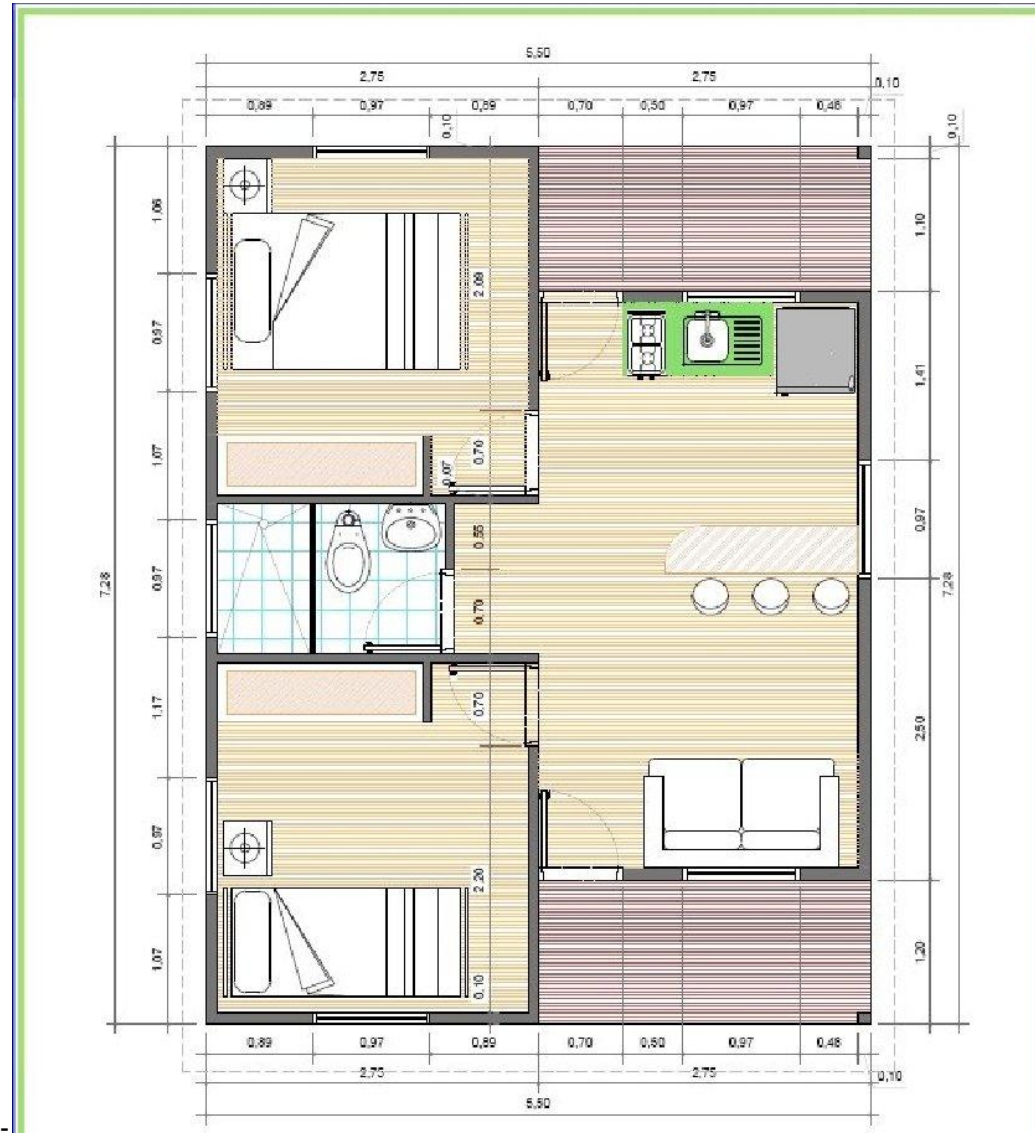


Alternative Style Fiber Cement Details of House = 42 M².

This can be erected once the concrete base that will be also installed to give a turnkey operation that will take between 5 to 7 days to erect with the use of local workers who will be supervised.

Each house will come with all services to connect to the local water and electricity supplies that have been made available. There is a provision for the supply of furniture, curtains. Kitchen and bathroom units that make it a complete home, ready for a family to live in.



Alternative Style Fiber Cement of House = 52.77 M².

This can be erected once the concrete base that will be also installed to give a turnkey operation that will take between 7 to 10 days to erect with the use of local workers who will be supervised. Each house will come with all services to connect to the local water and electricity supplies that have been made available. There is a provision for the supply of furniture, curtains, kitchen and bathroom units that make it a complete home, ready for a family to live in.

