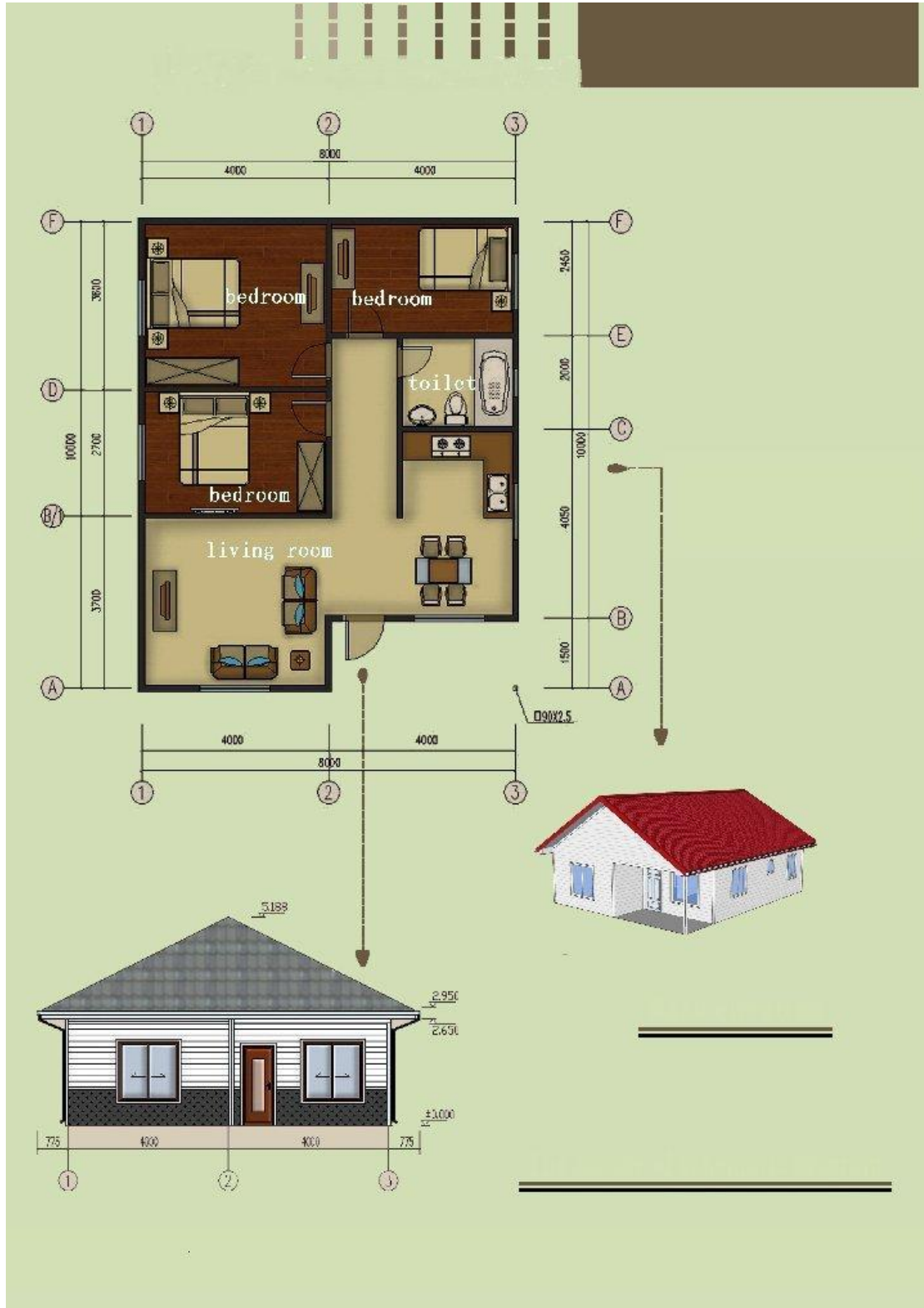
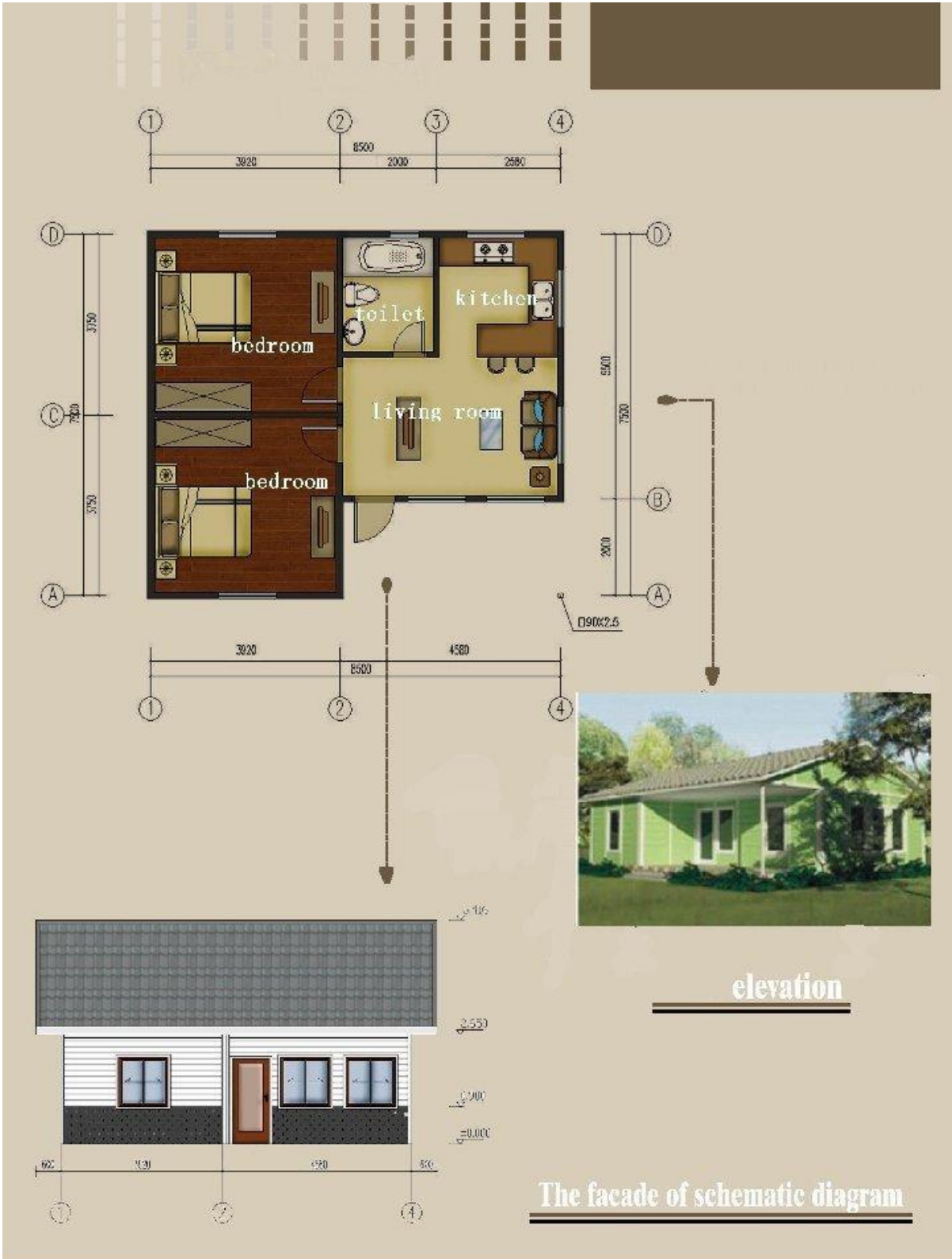


Light Steel Prefabricated Houses

The layout for the Prefabricated House No -01 = 83 m². This house is supplied with all services that are electrical and plumbing systems along with a choice of furniture and kitchen and bathroom units that can be constructed in a period 10 to 12 days after the concrete foundation is cast and ready for the house structure to be installed at the designated location.



The layout for the Prefabricated House No -02 = 66 m². This house is supplied with all services that are electrical and plumbing systems along with a choice of furniture and kitchen and bathroom units that can be constructed in a period 10 to 12 days after the concrete foundation is cast and ready for the house structure to be installed at the designated location.



The layout for the Prefabricated House No -03 = 96 m². This house is supplied with all services that are electrical and plumbing systems along with a choice of furniture and kitchen and bathroom units that can be constructed in a period 10 to 12 days after the concrete foundation is cast and ready for the house structure to be installed at the designated location.



The facade of schematic diagram

The layout for the Prefabricated House No -04 = 104 m². This house is supplied with all services that are electrical and plumbing systems along with a choice of furniture and kitchen and bathroom units that can be constructed in a period 15 to 20 days after the concrete foundation is cast and ready for the house structure to be installed at the designated location.



The layout for the Prefabricated House No -05 = 83 m². This house is supplied with all services that are electrical and plumbing systems along with a choice of furniture and kitchen and bathroom units that can be constructed in a period 15 to 25 days after the concrete foundation is cast and ready for the house structure to be installed at the designated location.



The layout for the Prefabricated House No -06 = 164 m². This house is supplied with all services that are electrical and plumbing systems along with a choice of furniture and kitchen and bathroom units that can be constructed in a period 15 to 25 days after the concrete foundation is cast and ready for the house structure to be installed at the designated location.

